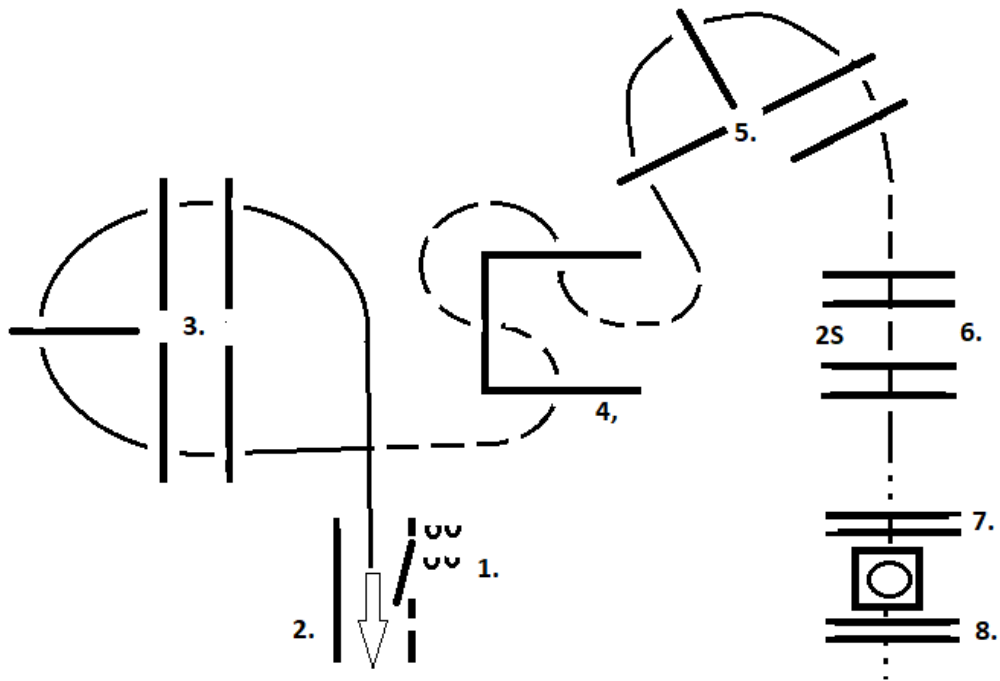


TRAIL- ALL EXCEPT WALK TROT



1. RIGHT HAND GATE
2. BACK
3. LOPE LEFT LEAD OVER 5 POLES
4. TROT 3 POLES
5. LOPE RIGHT LEAD OVER 4 POLES
6. TROT 4 POLES (2 STRIDES IN MIDDLE GAP)
7. WALK INTO BOX AND TURN 360 DEGREES EITHER WAY
8. WALK OVER POLES TO EXIT